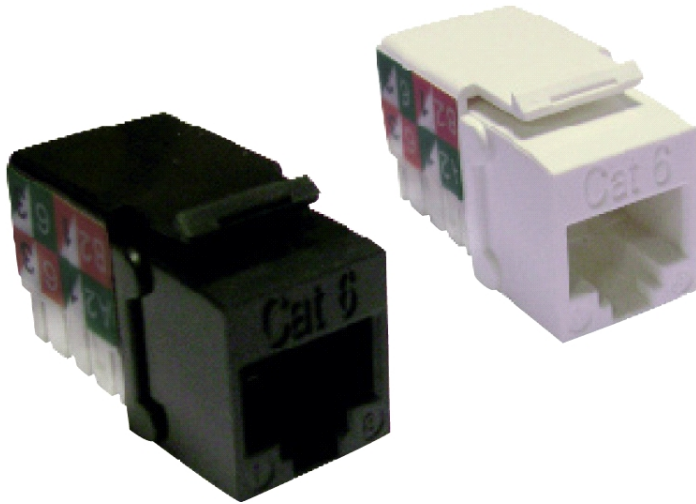


# Excel Category 6 Unscreened Twisted Pair (UTP) Keystone Jack Outlets



X 25 Year System Warranty

X Supports Gigabit Ethernet

X Choice of Colours

X LSA Punchdown Termination

X 3P Verified

## Features

- 25 Year System Warranty
- Choice of Colours
- 3P Verified
- Delta 4 & 6 Connector Channel Compliance
- Mounts in either panel or shutter
- No.3 cabling system by market share, as reported by BSRIA
- Supports Gigabit Ethernet
- LSA Punchdown Termination
- Category 6 compliant
- IDC point at 90° to jack
- Lifetime Product Warranty

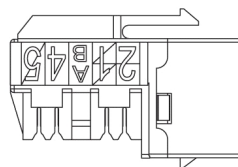
## Product Overview

As an alternative to the one piece shuttered Excel module range we offer the Excel Keystone Jack. Suitable for mounting in a range of faceplates, shutters and a 1U 24 port frame, these jacks are quick and easy to install.

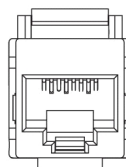
Each Excel Plus Keystone Jack is manufactured and tested to the ANSI/TIA/EIA 568-B.2.1, ISO/IEC 11801 Second Edition and EN 50173-1:2007 Category 6 Specifications. Termination can be made using 110 compatible tooling.

The superior design means that this component compliant jack is independently certified by Delta in a 4 & 6 channel model.

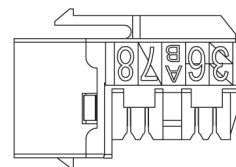
Side View



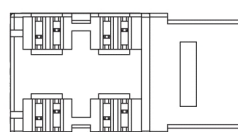
Front View



Side View



Bottom View



Wire Cap



## Performance Overview

Excel Category 6 Keystone jacks are manufactured and tested to the Category 6 performance standards defined by the TIA, ISO and EN standards' bodies. A range of performance characteristics are tested up to 250Mhz including return loss, attenuation and near end cross talk (NEXT) and far end cross talk (FEXT). Both Worst Case and Power Sum Test methods are applied. Actual performance exceeds the required standard - when tested in isolation and in circuit - resulting in sufficient headroom for even the most demanding applications.

As well as providing link and channel compliance - when installed with Excel category 6 components - with the aforementioned specification - the keystone jack is also backward compatible with Category 5 and 5e components.

## Typical Applications

- 10Base-T Ethernet
- 100BASE-TX Fast Ethernet
- 1000BASE-T Gigabit Ethernet
- 155 Mbps ATM
- 622 Mbps ATM
- Token Ring

## Performance / Specification Table

Specification	Category 6 <ul style="list-style-type: none"><li>· 2nd Edition ISO/IEC 11801</li><li>· EN 50173-1:2007</li><li>· ANSI/TIA/EIA-568-B.2-1</li></ul>
Wiring Specification	T568A & T568B
Dimensions	16.5mm wide x 19.2mm high x 30.9mm deep
Installation Recommendation	Suits outlet frames with 14.60 x 16.10mm jack opening / 19.20mm spring latch height - keystone
RJ45 Jack	Min life 750 insertions
RJ45 Jack	50 Microinch Gold Plated contact pins
IDC Contacts:	Suitable for 110 compatible tooling. Maximum 200 reterminations
Keystone Jack Housing:	ABS High-Impact UL94V-0 Thermoplastic
IDC Plastic:	Polycarbonate Resin High-Impact UL94V-0 Thermoplastic
Contact Compatibility:	22 to 26 AWG Solid and 24 AWG Stranded wire
Operating Temperature Range:	-10 to +60 °C
Storage Temperature Range:	-40 to +68 °C
NEXT at 250MHz	Category 6 39.50dB @250MHz (Power Sum)
FEXT at 250MHz	Category 6 26.20dB @250MHz (Power Sum)

## Part Number Information

Part No.	Description
100-011	Category 6 Unscreened (UTP) Keystone Jack, White
100-011-BK	Category 6 Unscreened (UTP) Keystone Jack, Black

## System Warranty

The Excel System Warranty provides a 25-year product and applications assurance of compliance with the industry performance standard appropriate to the class of cabling installed. The warranty may be applied for by an accredited Excel Partner who has designed, supplied and installed the said system.



Excel is a world-class premium performing end-to-end infrastructure solution - designed, manufactured, supported and delivered - without compromise.

Contact us at [sales@excel-networking.com](mailto:sales@excel-networking.com)

