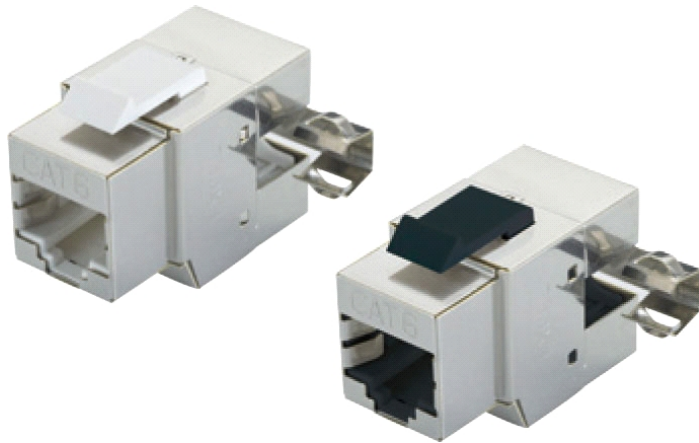


# Excel Plus Category 6 Screened Twisted Pair (STP) Keystone Jack Outlets



X 25 Year System Warranty

X Supports Gigabit Ethernet

X Choice of Colours

## Features

- 25 Year System Warranty
- Choice of Colours
- IDC point at 90° to jack
- Lifetime Product Warranty
- Supports Gigabit Ethernet
- Category 6 compliant
- Mounts in either panel or shutter
- No.3 cabling system by market share, as reported by BSRIA

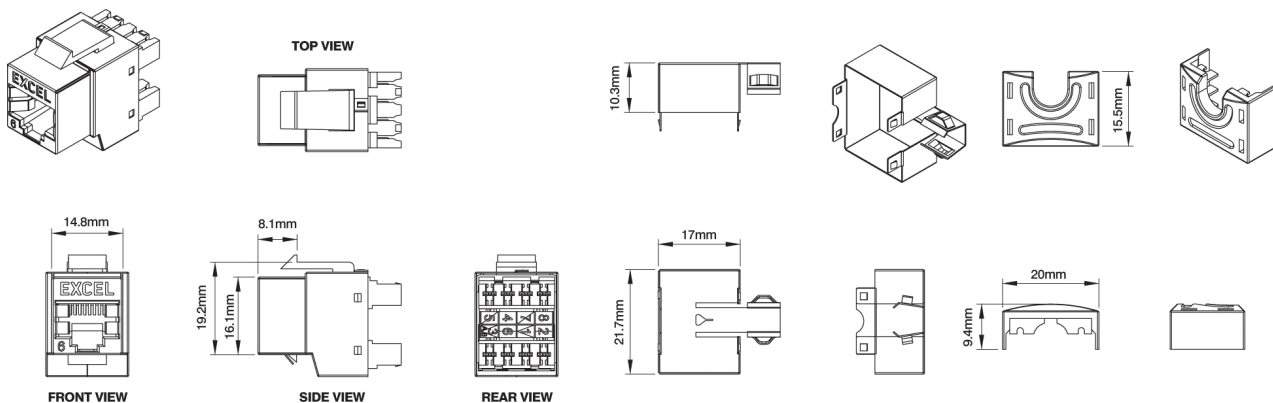
## Product Overview

As an alternative to the one piece shuttered Excel module range we can now offer the Excel Plus Keystone Jack options. Suitable for mounting in a range of faceplates, shutters and a 1u 24 port frame, these jacks are quick and easy to install. Each Excel Plus Keystone Jack is manufactured and tested to the ANSI/TIA/EIA-568-B.2-1 Category 6 channel performance. Termination can be made using 110 compatible tooling.

## Performance Overview

Excel Plus Category 6 Keystone jacks are manufactured and tested to the Category 6 performance standards defined by the TIA, ISO and EN standards' bodies. A range of performance characteristics are tested up to 250Mhz including return loss, attenuation and near end cross talk (NEXT) and far end cross talk (FEXT). Both Worst Case and Power Sum Test methods are applied. Actual performance exceeds the required standard - when tested in isolation and in circuit - resulting in sufficient headroom for even the most demanding applications.

As well as providing link and channel compliance - when installed with Excel category 6 components - with the aforementioned specification - the keystone jack is also backward compatible with Category 5 and 5e components.



## Typical Applications

- 10Base-T Ethernet
- 100BASE-TX Fast Ethernet
- 1000BASE-T Gigabit Ethernet
- 155 Mbps ATM
- 622 Mbps ATM
- Token Ring

## Performance / Specification Table

Specification:	Category 6 TIA/EIA-568B.2-1
Wiring Specification:	T568A & T568B
Installation Recommendation:	Suits outlet frames with 14.80 x 16.10mm jack opening/19.20mm spring latch height
RJ45 Jack:	Min. life 750 insertions
RJ45 Jack:	50 Micro-inch Gold Plated contact pins
IDC Contacts:	Suitable for 110 compatible tooling. Maximum 200 reterminations
NEXT at 250MHz	Category 6 39.50dB @250MHz (Power Sum)
FEXT at 250MHz	Category 6 26.20dB @250MHz (Power Sum)
Shielded Case:	Copper C2680
Keystone Jack Housing:	ABS High-Impact UL94V-0 Thermoplastic
IDC Plastic:	Polycarbonate Resin High-Impact UL94V-0 Thermoplastic
Contact Compatibility:	22 to 26 AWG Solid and 24 AWG Stranded wire
Operating Temperature Range:	-10 to +60 °C
Storage Temperature Range:	-40 to +68 °C

Excel is a world-class premium performing end-to-end infrastructure solution - designed, manufactured, supported and delivered - without compromise.

Contact us at [sales@excel-networking.com](mailto:sales@excel-networking.com)

**excel**  
without compromise.

E&OE. Excel is a registered trade name of Mayflex Holdings Ltd.

[www.excel-networking.com](http://www.excel-networking.com)