

Excel Optical Fibre Patch Panel - Sliding Drawer - SC Style Multimode/Singlemode



X Multimode and Singlemode

X Sliding Drawer Design

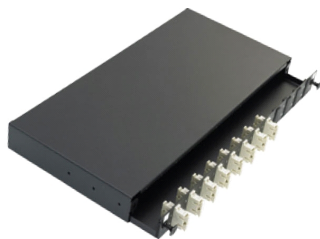
X Management and Fixing Kit Included

Features

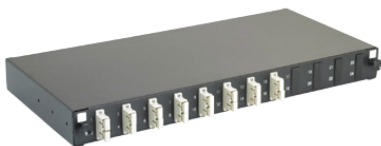
- Multimode and Singlemode
- Choice of Port Density
- Management and Fixing Kit Included
- Upto 24 duplex adaptors per patch panel
- Port identification numbers
- 25 Year System Warranty
- Sliding Drawer Design
- High Density - Upto 48 fibres
- 1U rack space design
- Adjustable fixing arms included
- Multiple cable entry to rear

Product Overview

The Excel range of SC patch panels are sliding drawer 'tray style' housings suitable for either direct termination or splicing of upto 48 fibres in 1U of rack space. Each panel is manufactured from high quality 2mm thick steel and finished in Black powder coated paint to provide a strong and durable unit. To the front of the patch panel the specified number of duplex adaptors are loaded from left to right. The fascia also houses the release latches for the sliding drawer. Each panels utilises colour coded adaptors, Beige for multimode, Blue for singlemode. Each duplex adaptor accommodates two terminated fibres. Each panel has included within it a set of adjustable fixing arms, and a cable management pack which includes cable entry glands, cable ties, and a 24 way splice bridge.



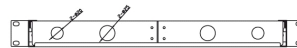
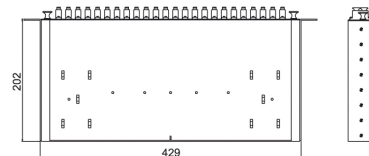
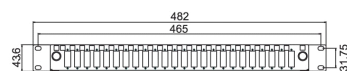
A. Sliding drawer design



B. Part loaded panels allow for expansion



C. Adjustable fixing arms. clear port and panel labelling



D. Product dimensions, front, plan and rear view and fixing arms, shown in mm

Accessories Included

Item	Quantity
Cable gland (PG 13.5)	1
Cable gland (PG 19)	1
Nylon cable tie	10
Adjustable cable tie	6
12 Position splice holder	2
Label holder (210 x 9.2 mm)	2
Mounting twist tie	6
Blanking plug (RSB-19)	2
Blanking plug (RSB-25)	3
Cage nut and screw rack mounting kit	1 pack

Product Specification

Patch Panel		ROHS Compliant Adaptor	
Width (inc fixing arms)	482 mm	Multimode Insertion Loss	0.2dB Maximum
Depth	202mm	Singlemode Insertion Loss	0.3dB Maximum
Height	43mm	Durability	Min Life 500 Insertions
Colour	Black RAL9005	Multimode Adaptor Wavelength	850 to 1300nm
Operating Temperature	-25 to +40 °C	Singlemode Adaptor Wavelength	1310 to 1550nm
		Operating Temperature	-40 to +80 °C

Part Number Information- Multimode

Part No.	Description
200-401	Fibre Optic Patch Panel 1U 8 Fibre SC Multimode - 4 Duplex Adaptors
200-405	Fibre Optic Patch Panel 1U 12 Fibre SC Multimode - 6 Duplex Adaptors
200-406	Fibre Optic Patch Panel 1U 16 Fibre SC Multimode - 8 Duplex Adaptors
200-407	Fibre Optic Patch Panel 1U 24 Fibre SC Multimode - 12 Duplex Adaptors
200-408	Fibre Optic Patch Panel 1U 48 Fibre SC Multimode - 24 Duplex Adaptors

Part Number Information- Single Mode

Part No.	Description
200-480	Fibre Optic Patch Panel 1U 8 Fibre SC - 4 Duplex Adaptors
200-481	Fibre Optic Patch Panel 1U 12 Fibre SC - 6 Duplex Adaptors
200-482	Fibre Optic Patch Panel 1U 16 Fibre SC - 8 Duplex Adaptors
200-483	Fibre Optic Patch Panel 1U 24 Fibre SC - 12 Duplex Adaptors
200-411	Fibre Optic Patch Panel 1U 48 Fibre SC Singlemode - 24 Duplex Adaptors

System Warranty

The Excel System Warranty provides a 25-year product and applications assurance of compliance with the industry performance standard appropriate to the class of cabling installed. The warranty may be applied for by an accredited Excel Partner who has designed, supplied and installed the said system.



Excel is a world-class premium performing end-to-end infrastructure solution - designed, manufactured, supported and delivered - without compromise.

Contact us at sales@excel-networking.com

excel
without compromise.

E&OE. Excel is a registered trade name of Mayflex Holdings Ltd.

www.excel-networking.com